

Subtrochanteric Fractures

Dr. (Prof.) Anil Arora

*MS (Ortho) DNB (Ortho) Dip SIROT (USA)
FAPOA (Korea), FIGOF (Germany), FJOA (Japan)
Commonwealth Fellow Joint Replacement
(Royal National Orthopaedic Hospital, London, UK)*

Senior Knee and Hip Replacement Surgeon

Associate Director

Department of Orthopaedics and Joint Replacement
Max Superspeciality Hospital, Patparganj, Delhi (India)

E-mail : anilarora@delhiorthojournal.com





R

R67

This is an anteroposterior (AP) radiograph of the pelvis and upper femurs. The image shows the bony structures of the pelvic girdle, including the iliac, ischial, and pubic bones, as well as the proximal femora. The central pelvic cavity is visible, and the sacrum is partially seen at the top. The label 'R67' is positioned on the left side of the image, which corresponds to the patient's right side. The overall image is in grayscale, typical of a standard X-ray.







Discussion

- Which Implant and When?
- Which Nail and When?
- Position?
- Any Tips for reduction.



On traction







01/08/07



LT



E.O.



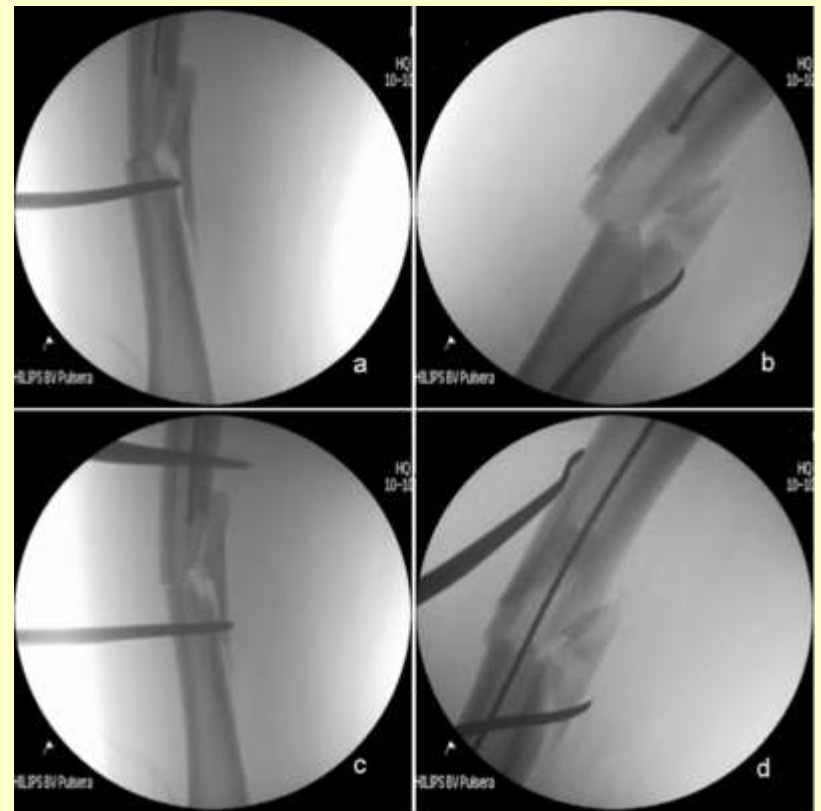


I.O

Message

- Assess fracture personality
 - Lesser Trochanter
 - Piriformis fossa
- Three Major decisions
 - Entry point (Trochanter/PF)
 - Type of proximal locking
 - One large screw..Gamma nail / Two Recon screws

- Reduction Aids
 - Thin Nail
 - Schanz Screw
 - Ball Spike
 - Percutaneous Clamp

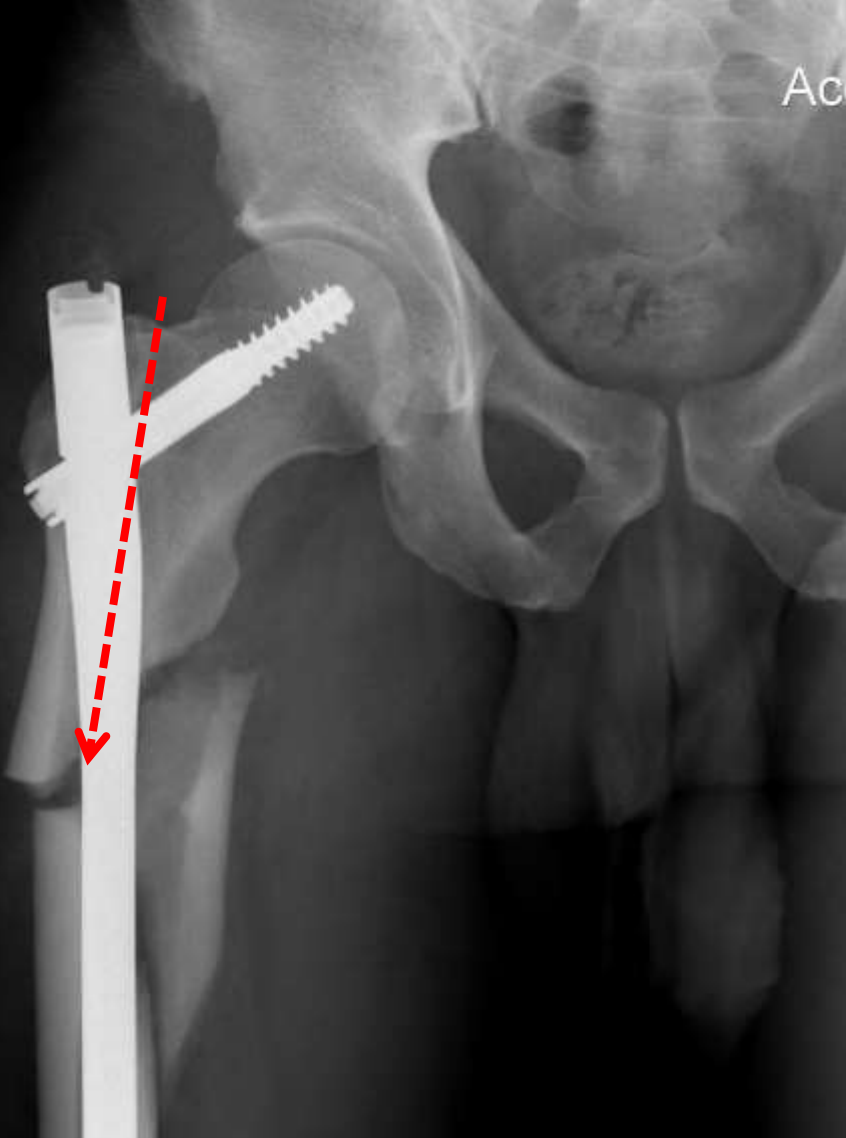


- Never ream in unreduced position.
- Avoid Varus Malreduction.

Im: 1/1

Ac

(43.3:1)









Thank You