

Patellar Issues

Dr. (Prof.) Anil Arora

MS (Ortho) DNB (Ortho) Dip SIROT (USA)

FAPOA (Korea), FIGOF (Germany), FJOA (Japan)

Commonwealth Fellow Joint Replacement

(Royal National Orthopaedic Hospital, London, UK)

Senior Knee and Hip Replacement Surgeon

Associate Director

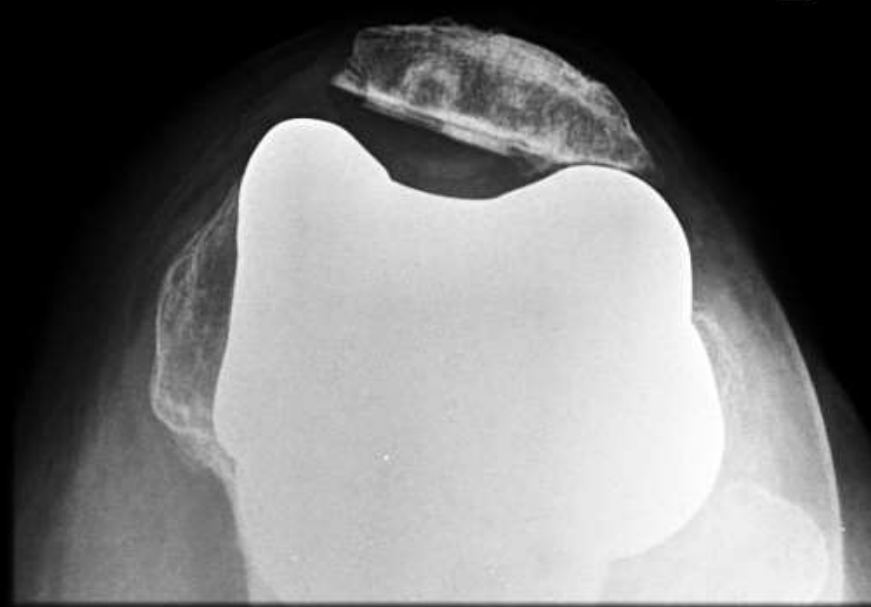
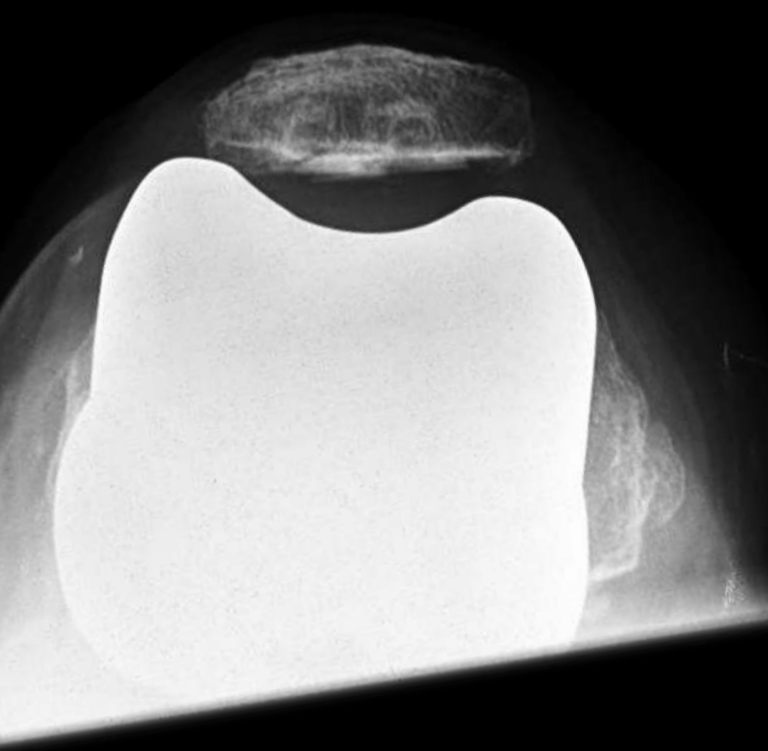
Department of Orthopaedics and Joint Replacement

Max Superspeciality Hospital, Patparganj, Delhi (India)

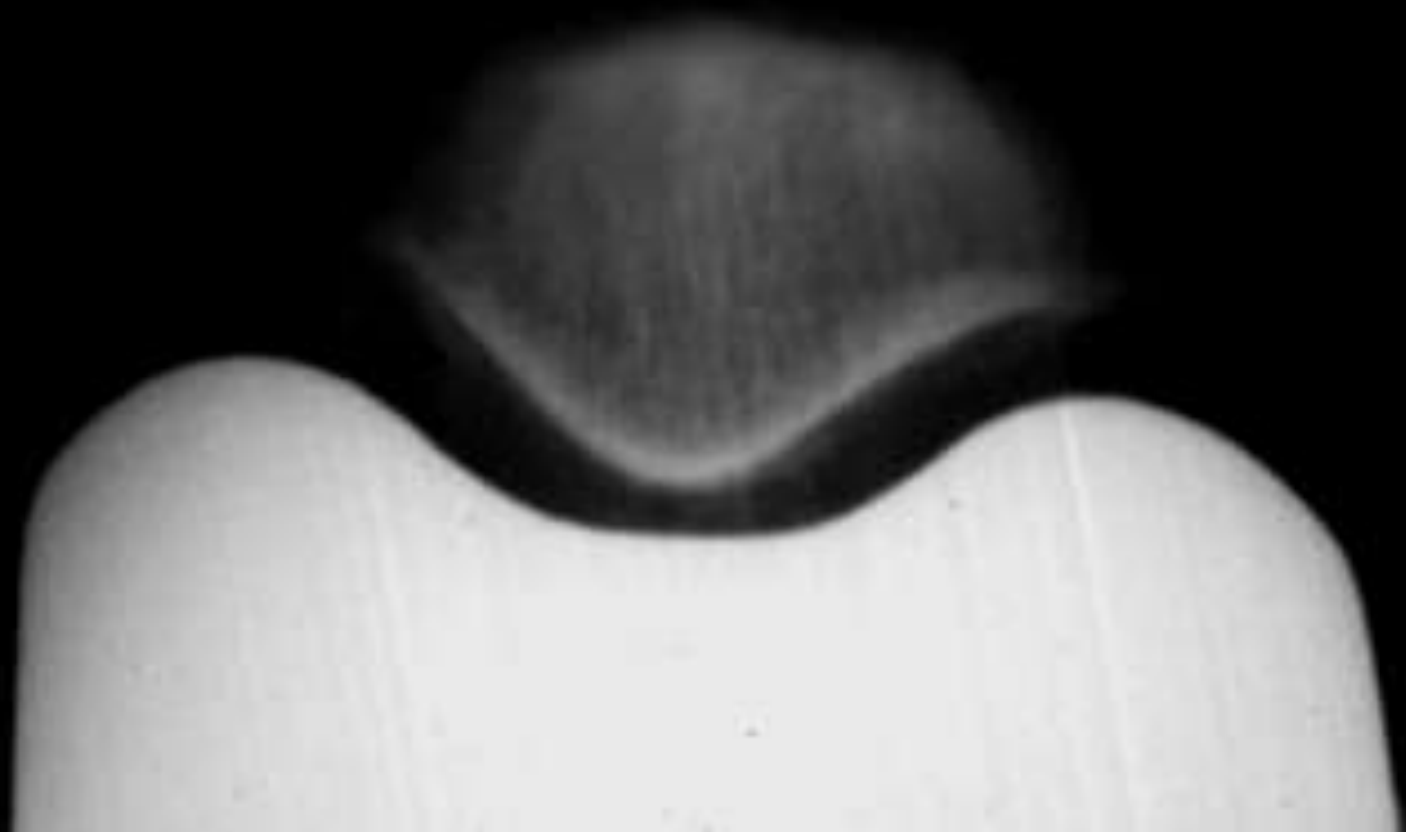
E-mail : anilarora@delhiorthojournal.com

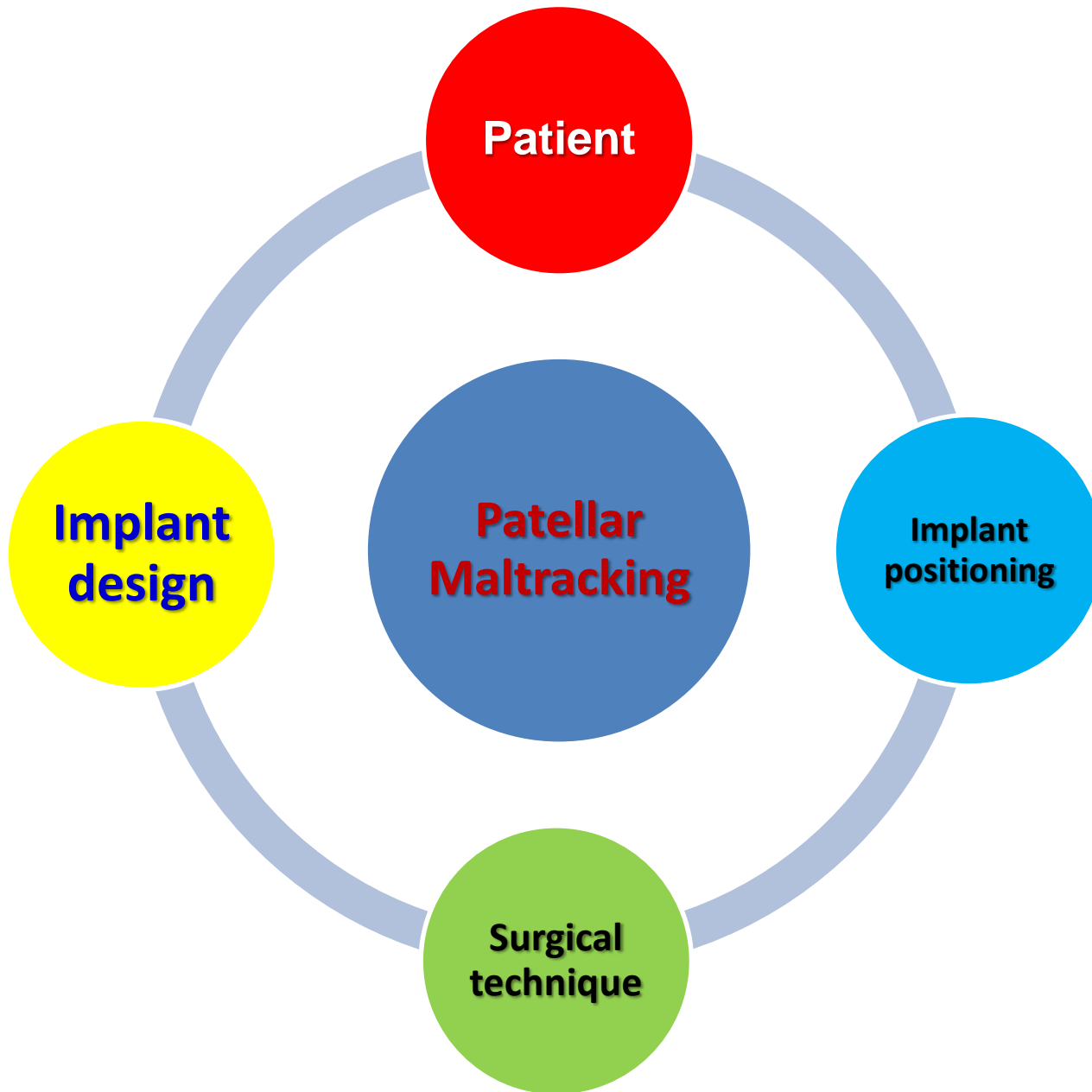
5 Patellar Tracking Excellent.AVI

6 Patellar Tracking Zoomed.wmv



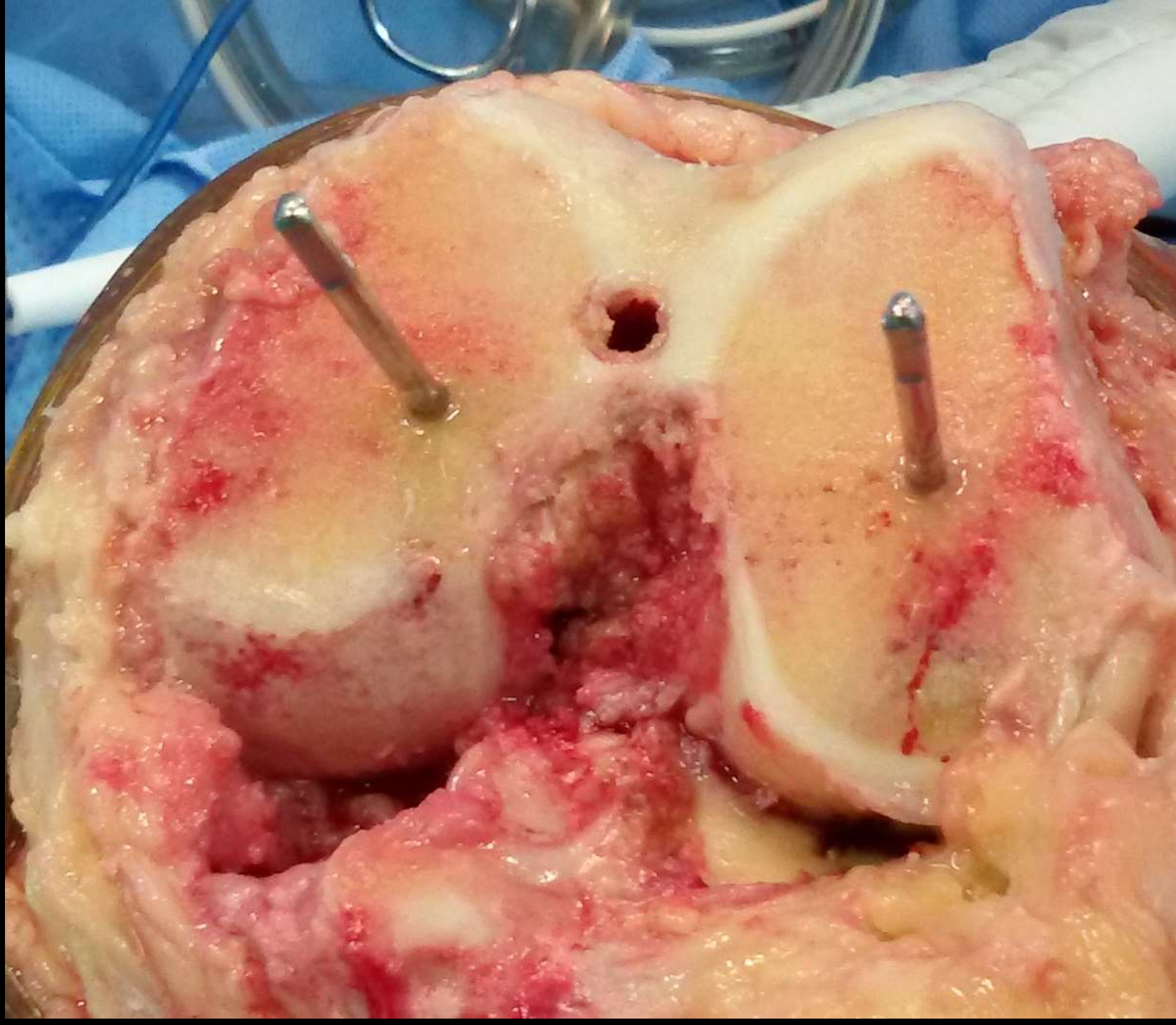
L





Factors

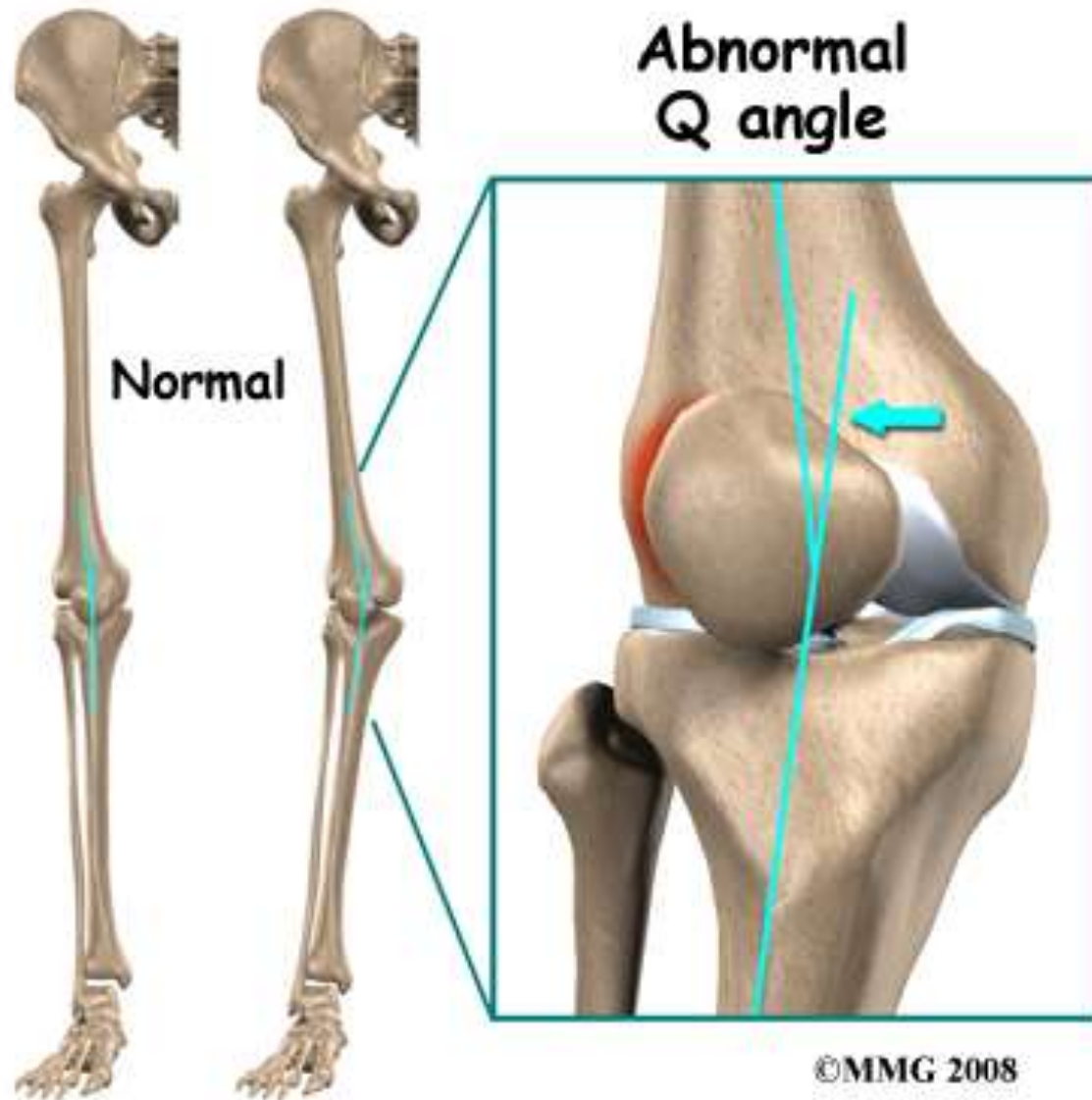
- ❑ Alignment and rotation of the components
- ❑ Patella (native or resurfaced) thickness
- ❑ Positioning of the patellar component
- ❑ Size of the femoral and tibial components
- ❑ Tightness of the lateral retinaculum : valgus
- ❑ **Design of the femoral component**
- ❑ **Patella Baja**
- ❑ **Severe preoperative valgus & Q angle**
- ❑ **Pre-existing PF dysplasia**



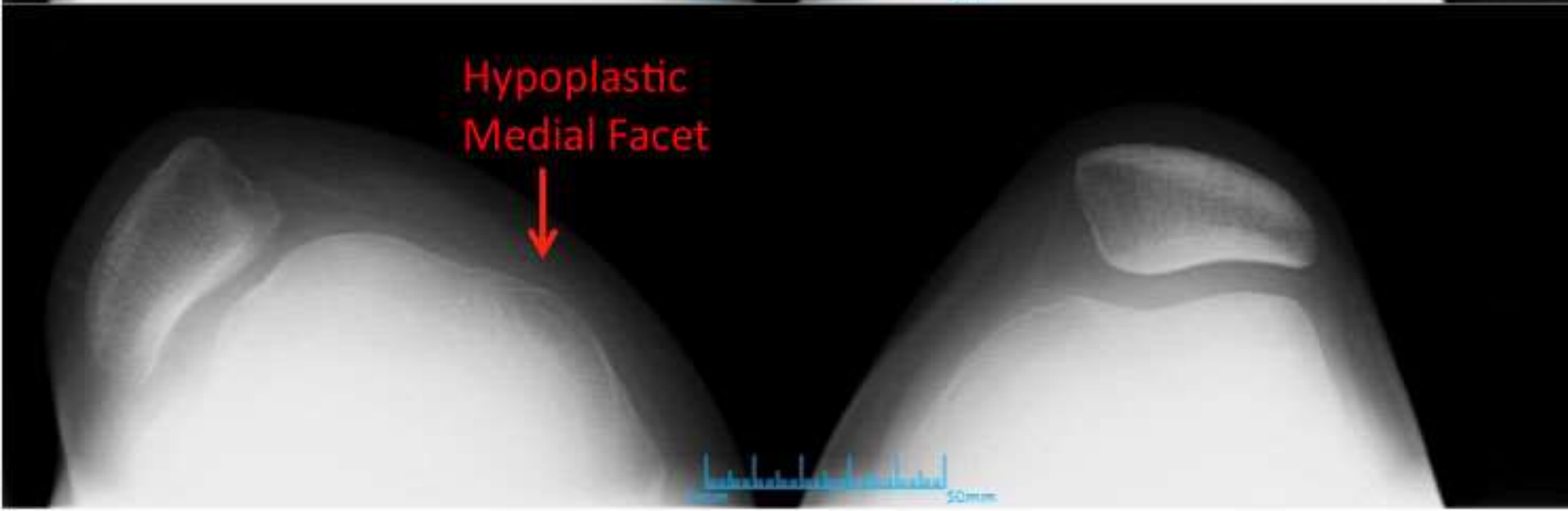
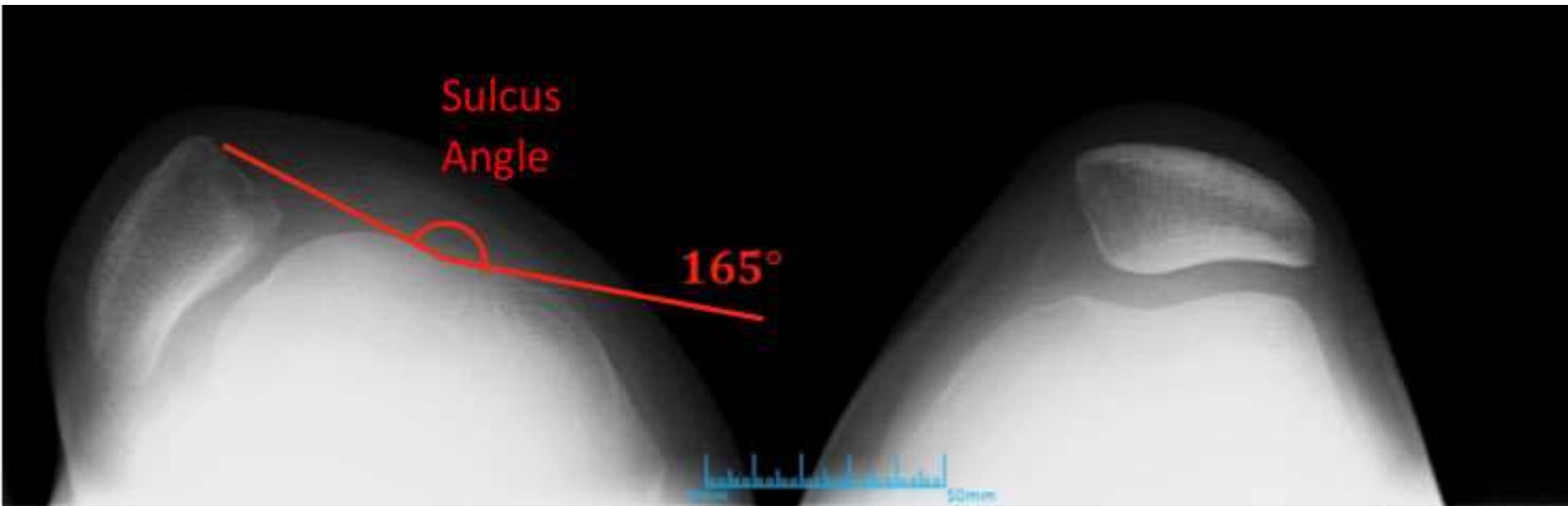
Design of the femoral component



Severe preoperative valgus & Q angle



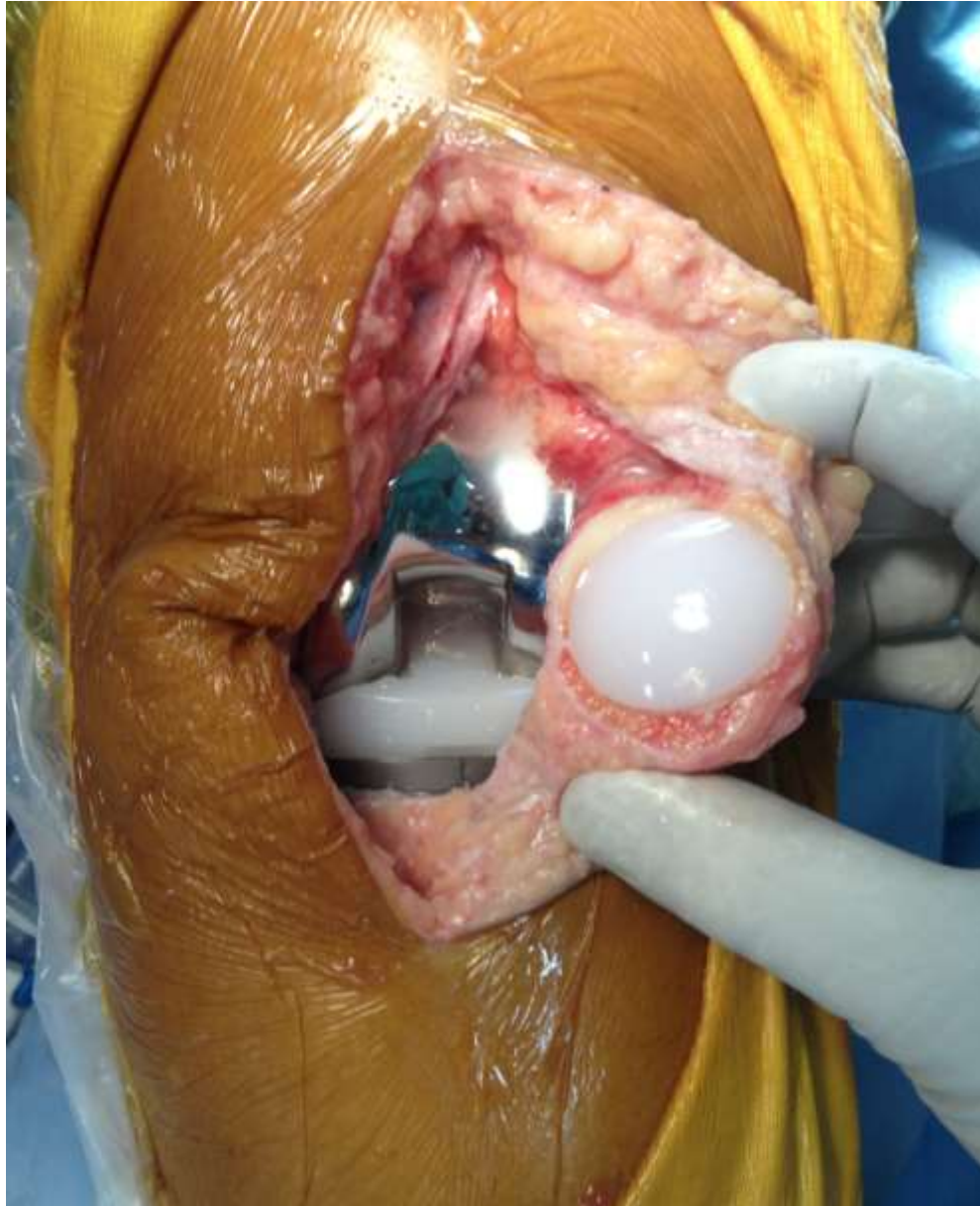
Pre-existing PF dysplasia



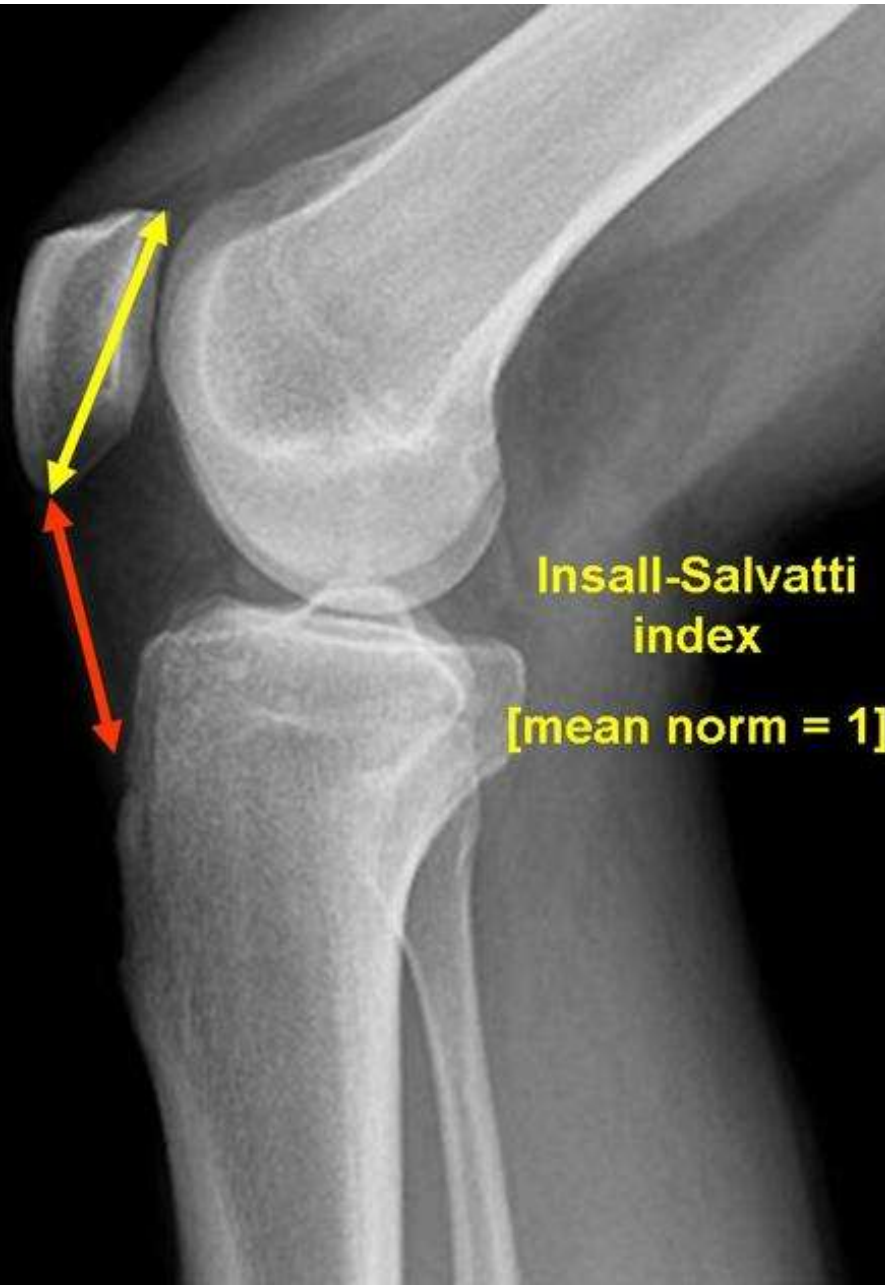
Tightness of the lateral retinaculum



Positioning of the patellar component proximal-distal and medial-lateral directions



Patella height



Prevention

- **Preventing any incongruence,**
- **Keep a check at every step of the surgical procedure**
- **Prompt reassessment of the size, rotation, translation and balance of each component**

Keep a check at every step of the surgical procedure



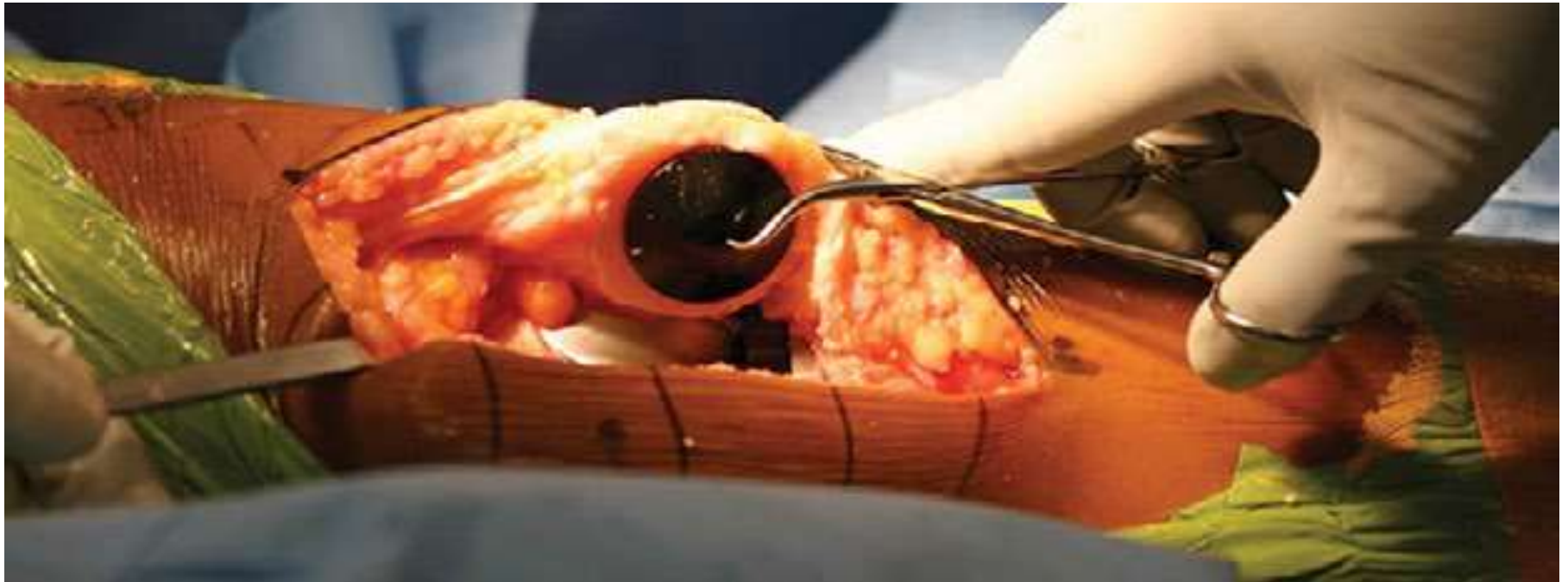
3 Patellar Tracking Before Tibia Cutting.mp4

Intraoperative assessment of the patellar tracking

- Trial tibial insert must have the correct thickness
- “No-thumb test” with the tourniquet deflated and the medial capsule open
- Towel clip test
- Vertical patella test

Vertical Patella Test

A towel clip is used to evert the patella to 90o in relation to the femoral component



Vertical patella test

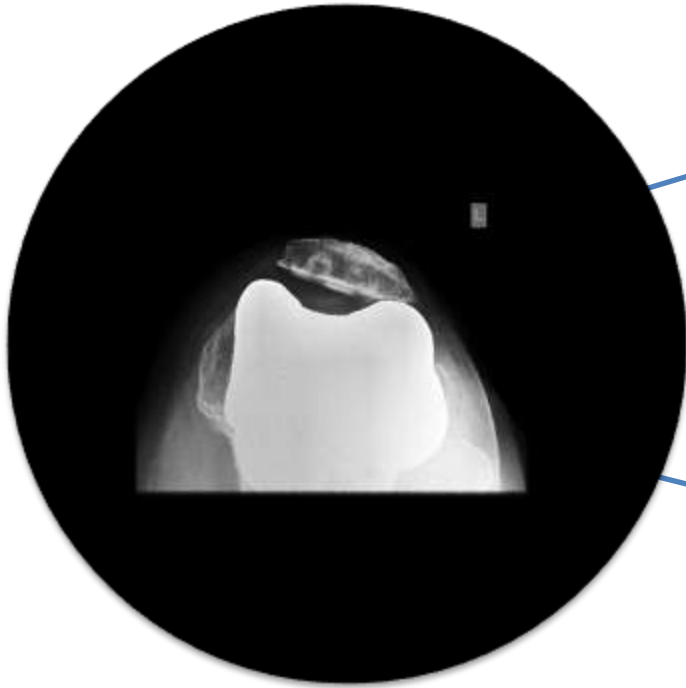
The patella is then translated medially so that its lateral border is past the middle of the intercondylar groove of the femoral component



8 Maltracking Patella.mp4

9 Lateral Facetectomy.mp4

10 Lateral Patellar Release.mp4



**Major
surgical
mistake**

**Several
minor
errors**

Treatment

- Patellar resurfacing
 - Placement of the patellar component in a more medial position relative to the center of the retropatellar surface
- Essential to re-create physiological patella thickness after resurfacing
- Maintenance of the patellar height
- Lateral retinaculum release

Patellar Facetectomy

THANKS A
LOT